



LET'S BUILD A BETTER FUTURE

Flush mounted roller shutter systems **SP | SP-E**

SP & SP-E flush-mounted systems are mainly designed for use in newly erected buildings, but also in existing ones, once the necessary changes to the lintel are made. It is important to plan the use of such solutions, which also applies to their installation method, this as early as at the building design stage, to allow for the effective use of the product's functional values.

SP & SP-E systems bring excellent thermal & sound insulation performance as they do not interfere with windows, doors or lintels, and thus they do not affect the building's energy use. What's more, they integrate the building's facade and form an integral part thereof.

A large selection of standard colours meets the requirements of the most demanding customers. Colour coats of extruded elements are made using the method of powder coating technology. It provides high quality and durability of the product.



ROLLER SHUTTERS BOXES



SP



SP-E



SP + MKT



SP-E + MKT

DRIVES AND ACCESSORIES



Strap box coilers



Winches for strap



Handles



Springs



Motors



Remote controllers



Two-way and key switches



Timer switches



ZenPro SmartControl Control Unit



ZenPro SmartPilot Control Unit

PROFILES

Aluminium profiles filled with CFC-free foam perforated or not perforated, type:



PA 37 | profile height: 37 mm
thickness: 8,5 mm



PA 39 | profile height: 39 mm
thickness: 9 mm



PA 40 | profile height: 40 mm
thickness: 8,7 mm



PA 43 | profile height: 43 mm
thickness: 8,8 mm



PA 45 | profile height: 45 mm
thickness: 9 mm



PA 52 | profile height: 52 mm
thickness: 13 mm



PA 55 | profile height: 55 mm
thickness: 14 mm

Extruded aluminium profiles, type:



PE 41 | profile height: 41 mm
thickness: 8, 5 mm

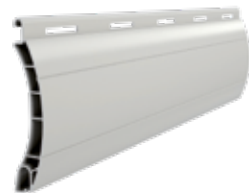


PE 55 | profile height: 55 mm
thickness: 14 mm

Profiles PVC, type:

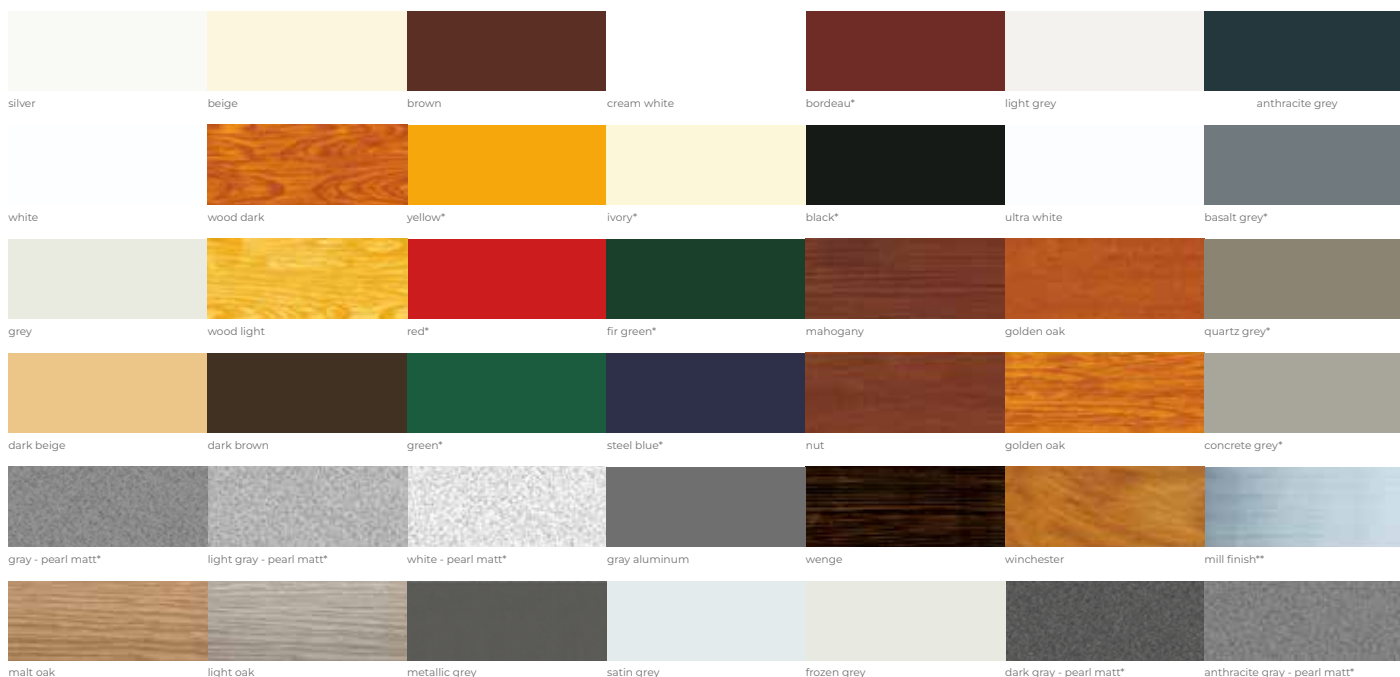


PT 37 | profile height: 37 mm
thickness: 8 mm



PT 52 | profile height: 52 mm
thickness: 14 mm

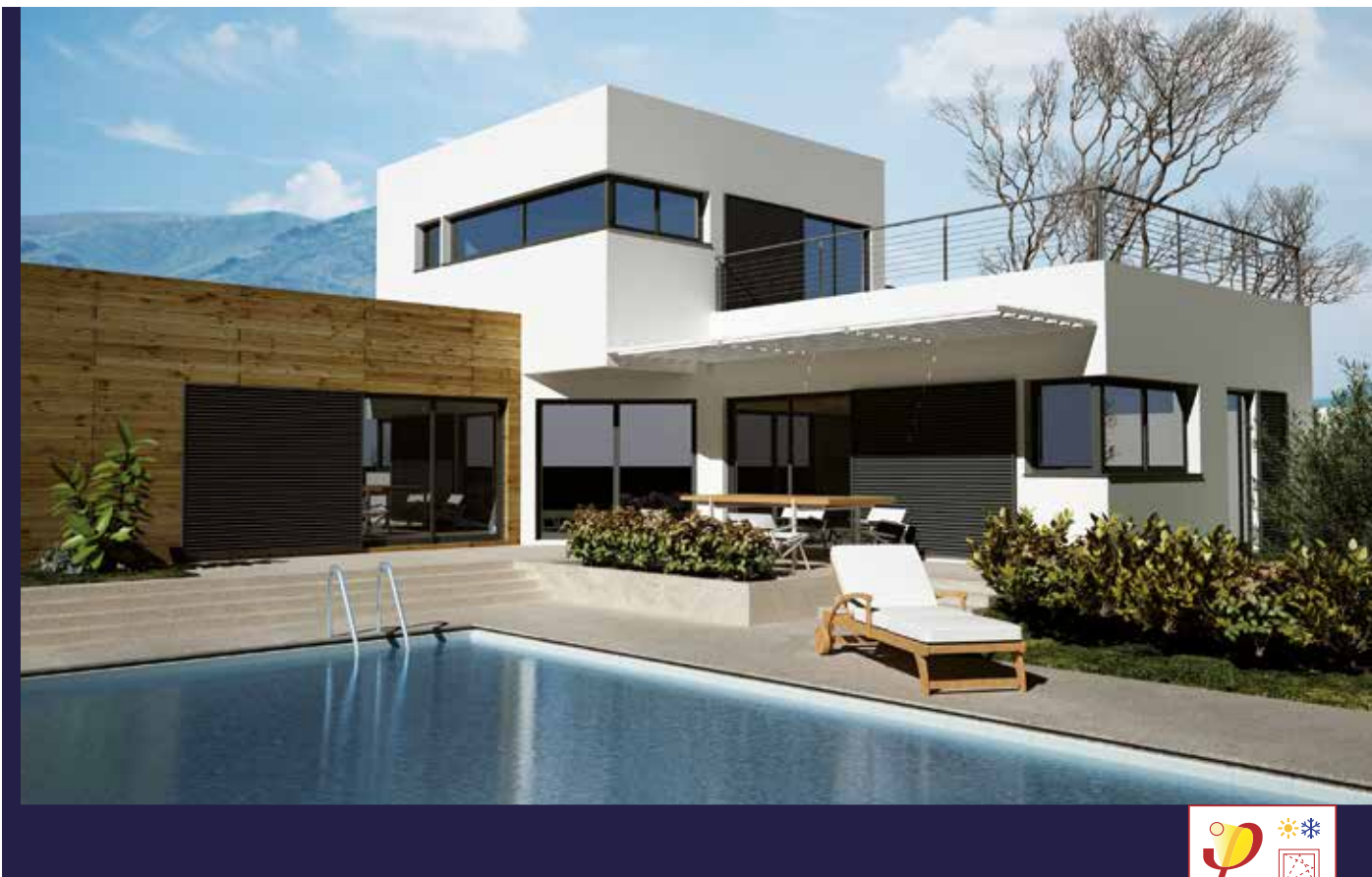
PROFILES COLOUR RANGE



The colours don't pattern faithfully upon the real colours. The availability of colours depends on the profiles' type.

* - Special color – on order.

** - On request can be painted in any RAL color.



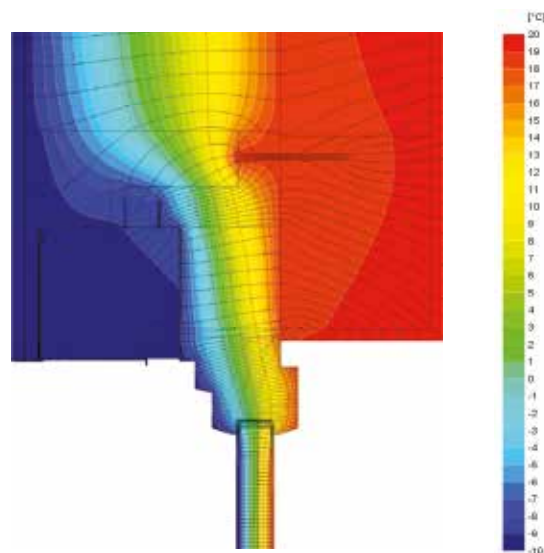
CERTIFIED

The Passive House Institute

The Passive House Institute in Darmstadt (PHI) has shown its appreciation for Aluprof's SP and SP-E rollers shutters performances. The Institute issued a certificate for the roller-box 165 or lower, approving both systems and their installation as a solution for passive houses. SP & SP-E roller shutters are based on flush mounted system in which the front section of the roller-box is equally a basis for any finishing material. The roller shutter's components do not interfere with windows, doors or lintel and thus do not affect the tightness of the entire building.

SP & SP-E systems were designed to prevent the heat from escaping and to provide an attractive finish to the façade. Suitable installation method enables the use of any window recommended by the PHI, i.e. windows whose heat transfer coefficient U_w does not exceed $0.80 \text{ W}/(\text{m}^2\text{K})$, and the glass coefficient U_g does not exceed $0.70 \text{ W}/(\text{m}^2\text{K})$.

It's the first PHI certificate for a Polish company in this group of products. It's also the first all-in-one solution in the PHI passive components base.



Isothermal lines

